

Selected Case

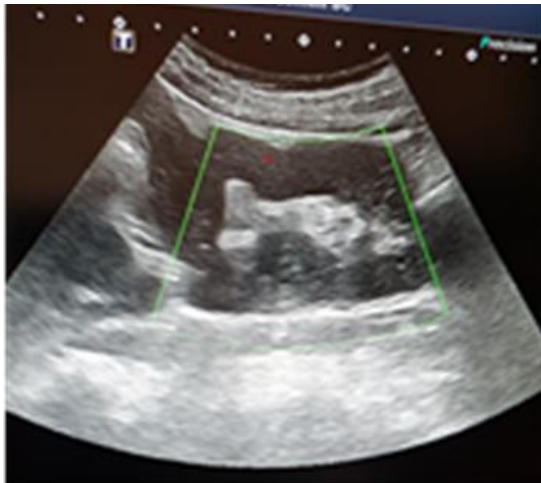
Female patient 45 years old, presented clinically by chronic abdominal pain, constipation and weight loss. **(a)** B- mode ultrasound scan axial plane, on right lumbar region presenting a segment of ascending colon with diffuse irregular mural thickening and heterogeneous hypoechoic texture resulted in narrowed lumen (hyperechoic center). **(b)** B- mode ultrasound longitudinal scan, on ascending colon, showing long segment of irregular thickening. **(c)** Color mode ultrasound scan exhibiting mild mural vascularity. **(d)** B-mode scan of ileo-cecal valve ending in dilated cecum. **(e & f)** Colonoscopic images exhibiting large circumferential cauliflower mass bulging into lumen with marked narrowing, that prevents further advancement of instruments. Snips were taken for pathological assessment which revealed invasive grade II adenocarcinoma on top of tubulovillous adenoma with high grade dysplasia.



(a)



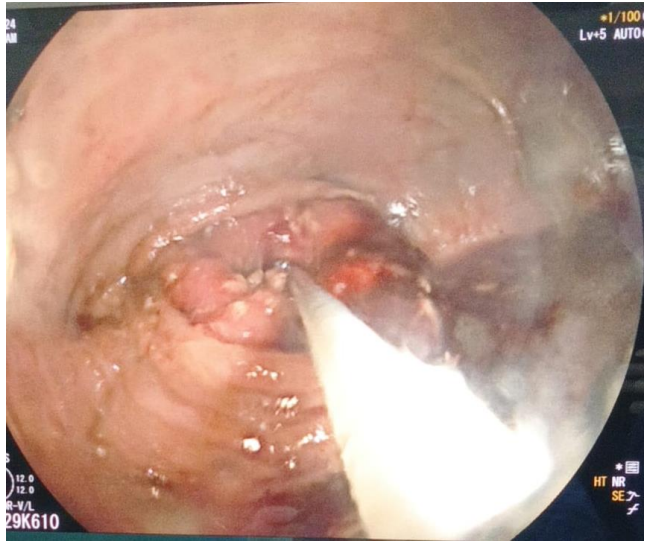
(b)



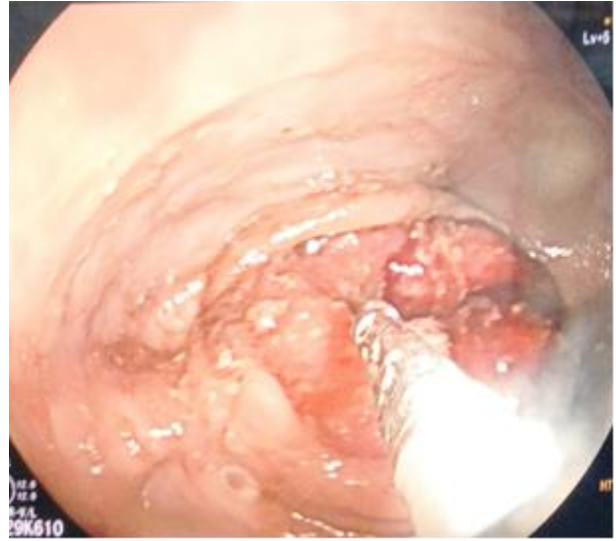
(c)



(d)



(e)



(f)